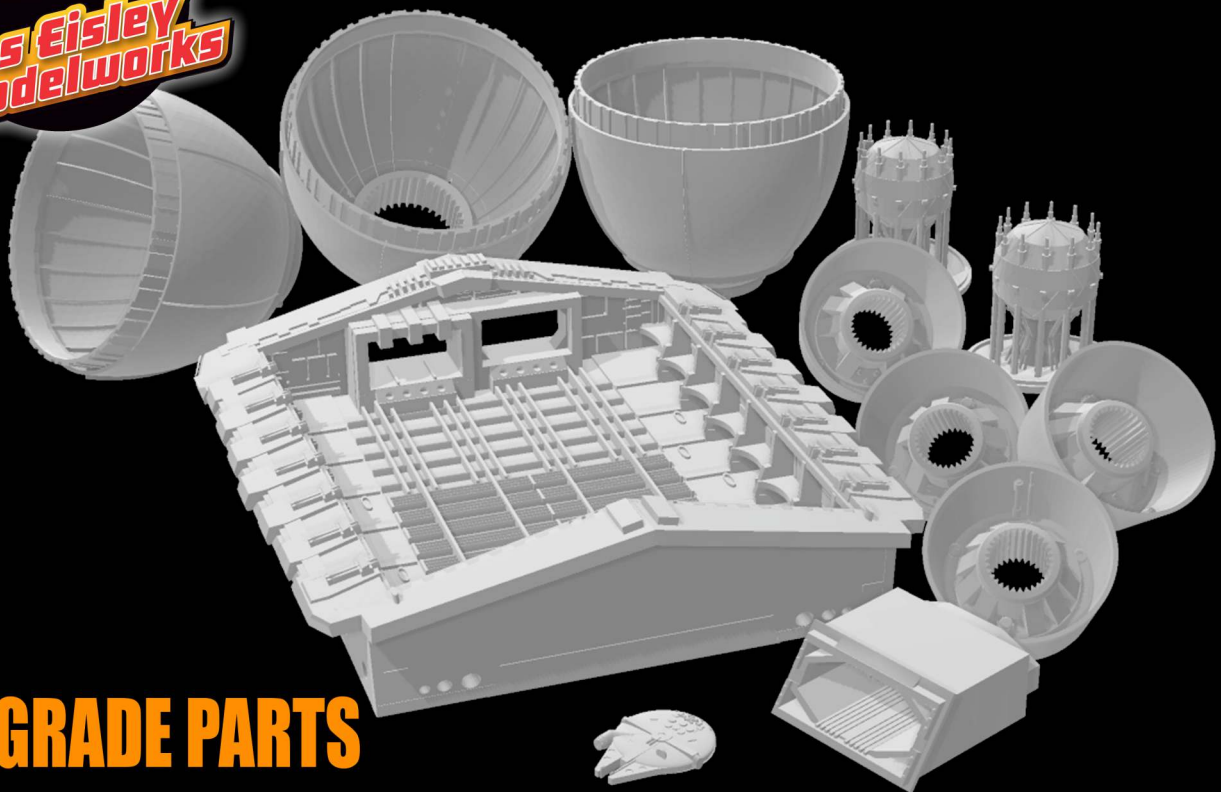
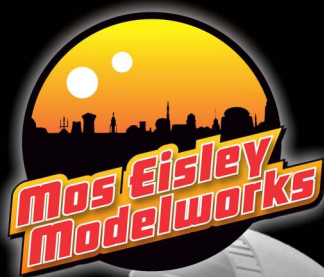


Zvezda/Revell ISD Upgrade

1:2700 Scale Model parts



UPGRADE PARTS

MosEisleyModelworks.com

Notes on: Assembly

Working With Resin

Cleaning Parts

This model is 3D printed in UV sensitive resin. It has been rinsed, cleaned, rinsed again and then given a final cure before shipping. You may clean the parts again to remove any oils from your fingers if you wish. If you choose to clean the parts use light soap or mild de-greaser in luke warm (not hot) water.

Warped Parts

Occasionally a part may be slightly warped. It is simple to fix by running the part under hot water; once it had softened, you can bend it carefully back into shape. Once the part is straight hold it in place under cold water to set the shape.

Surface Prep

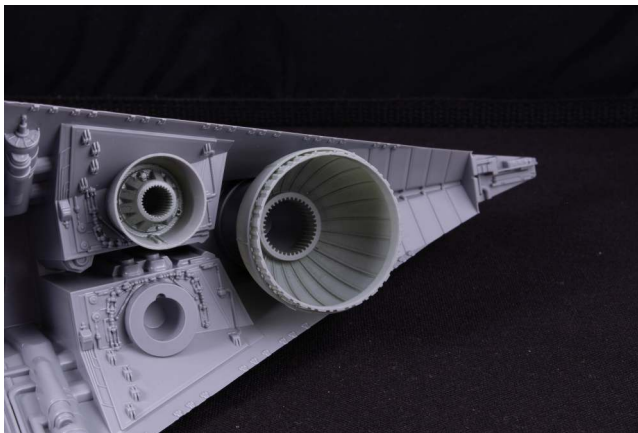
Like styrene models the surface of some resin pieces may need some smoothing or sanding. There are no mold lines with 3D printed parts but there may be small dimples to smooth. Most parts To do this, simply use fine grit sandpaper* and smooth any imperfect surfaces. I also recommend a filler putty like Tamiya Putty, Perfect Plastic or Mr. Surfacer if needed to fill small imperfections.

Glue

To glue resin, you should use Cyanoacrylate (Super Glue). You can sand the join area first to give it some tooth and a stronger bond if desired. For an extra strong bond- 2 part epoxy can be used on large pieces. You may also choose to drill small holes and pin pieces together though on the TIE Bomber model I have not found this necessary.

Zvezda/Revell ISD Upgrade

Some of the upgrade parts included in this pack will require alterations to the stock kit parts. The following pages illustrate where these parts are installed. I have outlined the manner in which I made these alterations however the methods used to achieve this are completely up to the individual modeler.

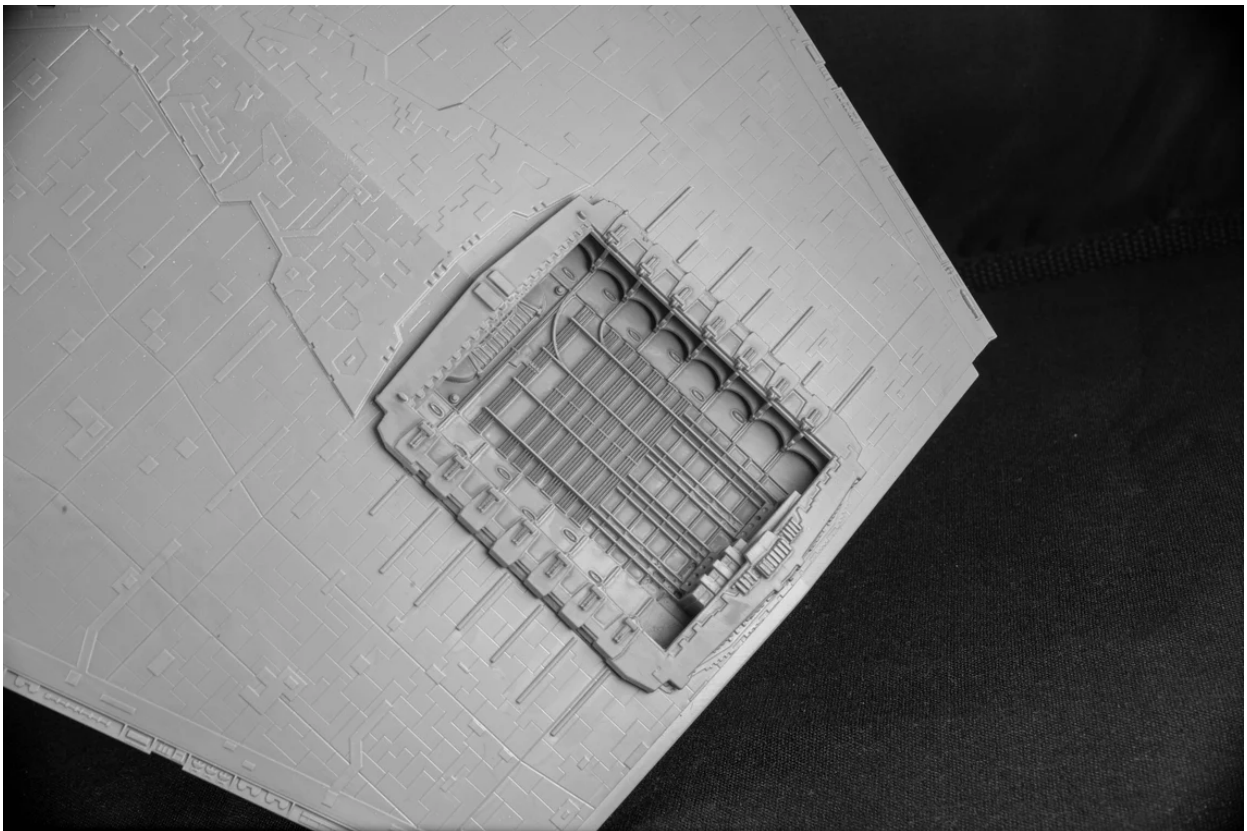
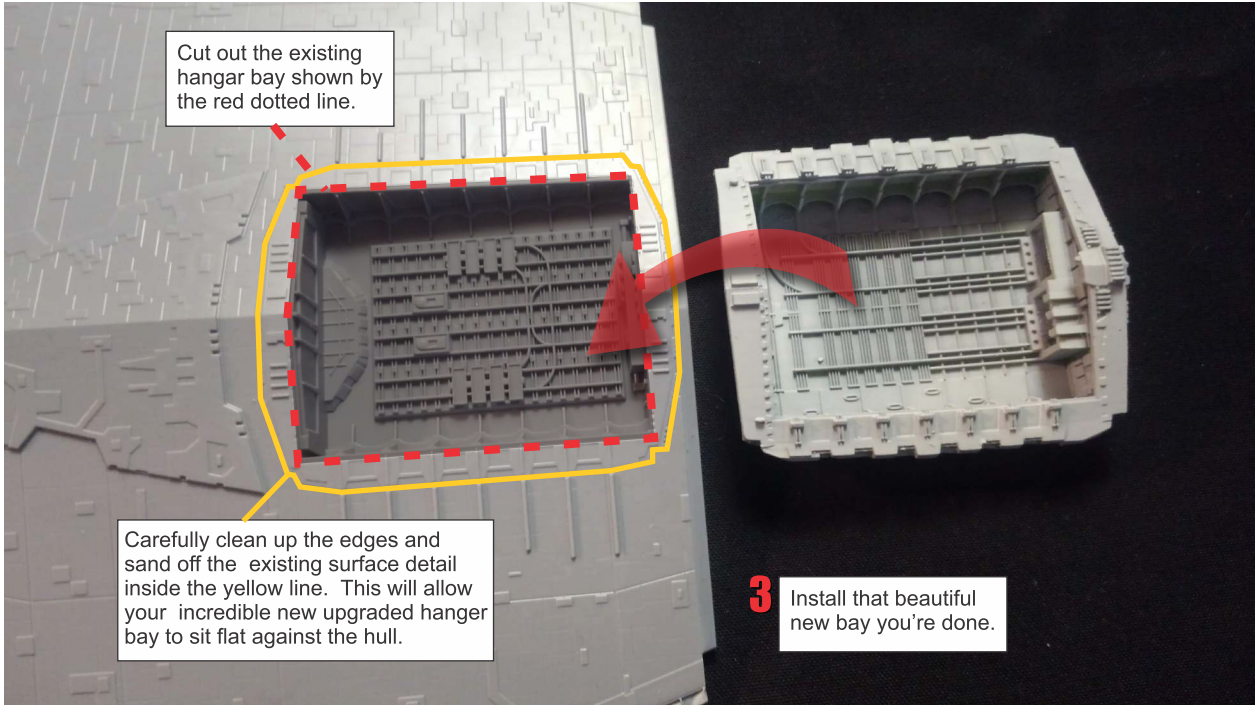


The main engine bells as well as the secondary engine bells will fit as direct replacements for the stock parts and no alterations are needed.

1



Hangar Replacement

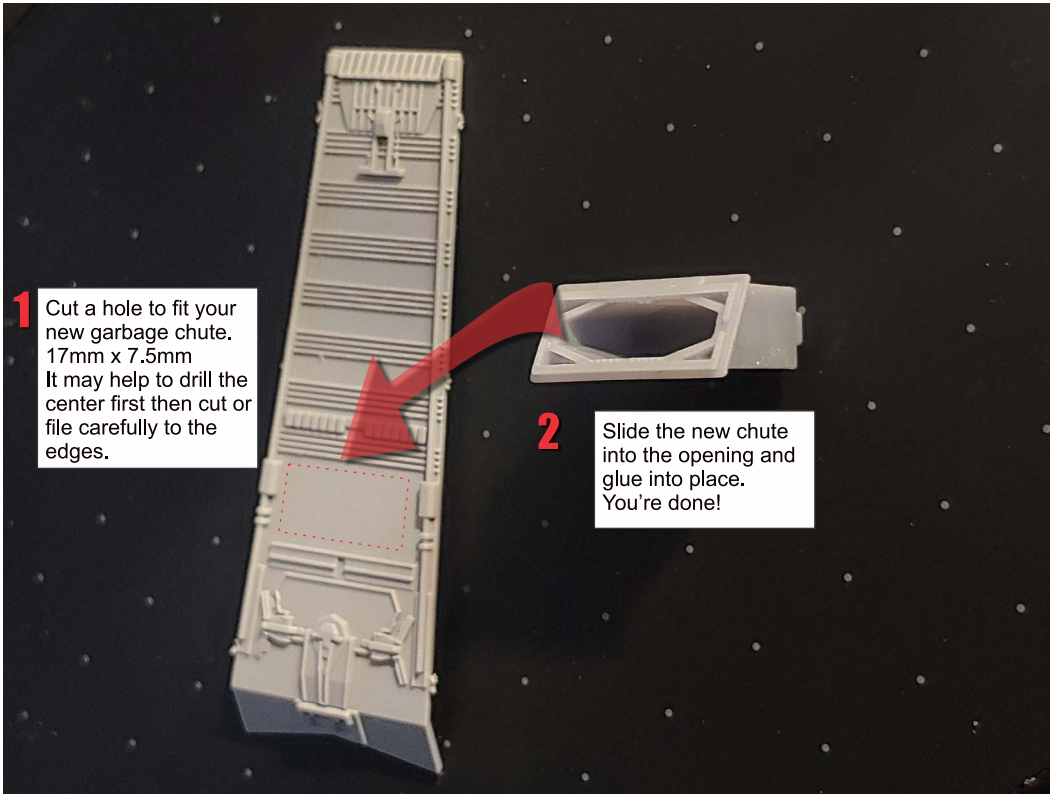


Assembly

2



Garbage Chute Upgrade



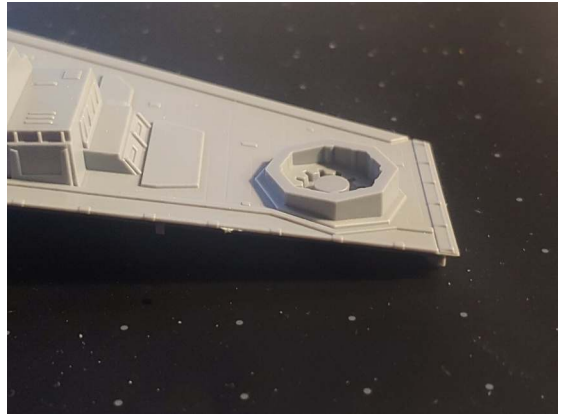
Assembly

3



Deflector Shield Generator Replacement

Stock piece. The tower base is flat and sticks up off of the angled top of the bridge. It needs cut off flush with the bridge top.



Here is the part taped to protect the surface. I used a Trumpeter model saw (pictured) to make the cut.

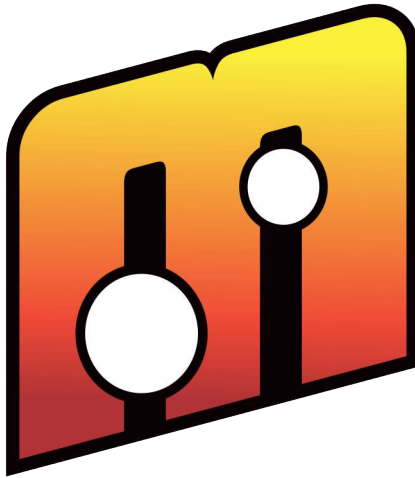


After the cut.



Replacement tower glued in position.





Visit us at
www.moseisleymodelworks.com
to stay up to date on kits, upgrades
and upcoming projects!